

1 μm
|-----|

Mag = 20.00 K X

EHT = 5.00 kV

Signal A = SE2 Date :16 Feb 2017

WD = 4.3 mm

File Name = BC0815_01.tif





10 μm



Mag = 2.00 K X

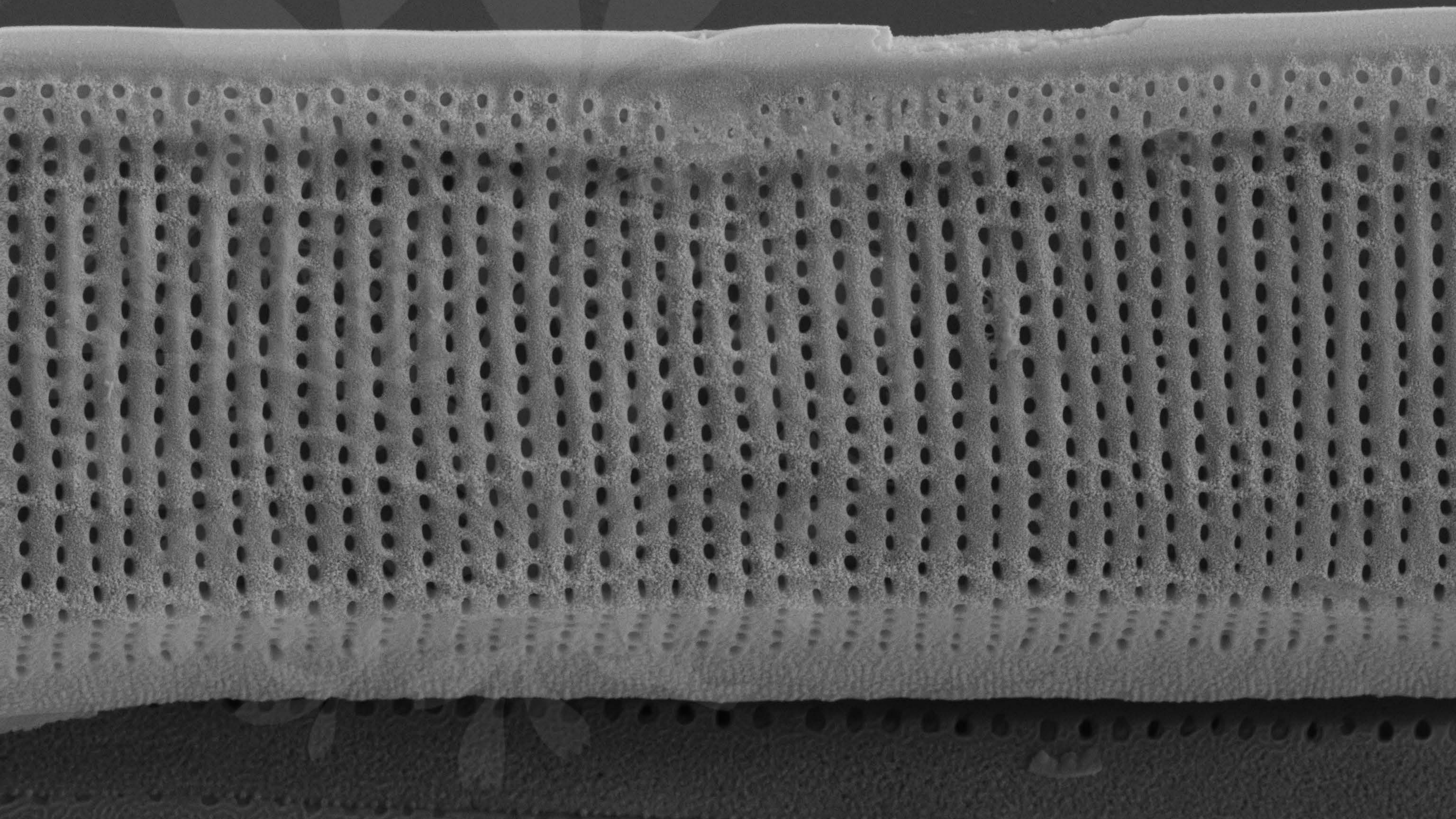
EHT = 5.00 kV

Signal A = SE2 Date :16 Feb 2017

WD = 4.3 mm

File Name = BC0815_02.tif





1 μm
|-----|

Mag = 20.00 K X

EHT = 5.00 kV

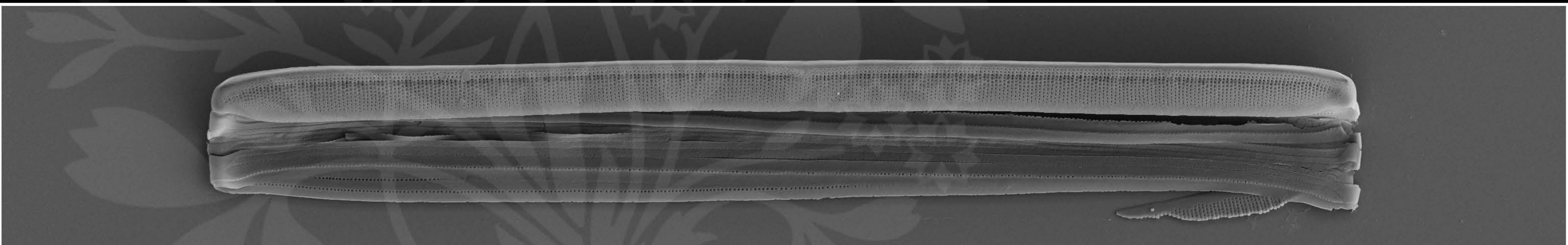
Signal A = SE2

Date :16 Feb 2017

WD = 4.3 mm

File Name = BC0815_03.tif





10 μm



Mag = 2.01 K X

EHT = 5.00 kV

Signal A = SE2 Date :16 Feb 2017

WD = 4.3 mm

File Name = BC0815_04.tif

